



License No. 800025015
FL License # CMTL-0003
CLIA No. 10D1094068

Certificate of Analysis

R&D

3CHI
274 MEDICAL DR # 875
CARMEL, IN 46082

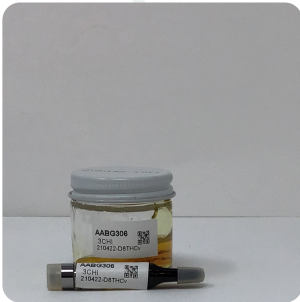
Batch # 210422-D8THCv
Batch Date: 2021-04-22
Extracted From: Hemp

Test Reg State: Florida

Order # 3CH210422-040034
Order Date: 2021-04-22
Sample # AABG306

Sampling Date: 2021-04-26
Lab Batch Date: 2021-04-26
Completion Date: 2021-05-21

Initial Gross Weight: 74.107 g



Product Image

Potency Tested
 Potency Tested
 Terpenes Tested
 Heavy Metals Passed
 Mycotoxins Passed

Pesticides Passed
 Residual Solvents Passed
 Pathogenic Microbiology Passed
 Listeria Monocytogenes Passed

Delta 8/Delta 10 Potency

12

Specimen Weight: 54.390 mg

Pieces For Panel: 2

Analyte	Dilution (1:n)	LOD (%)	LOQ (%)	Result (mg/g)	(%)
Delta-8 THC	10.000	0.000026	0.001	764.047	76.405
CBC	10.000	0.000018	0.001	92.521	9.252
THCV	10.000	0.000007	0.001	7.045	0.704
CBD	10.000	0.000054	0.001	2.277	0.228
CBGA	10.000	0.00008	0.001	<LOQ	<LOQ
CBDA	10.000	0.00001	0.001	<LOQ	<LOQ
CBG	10.000	0.000248	0.001	<LOQ	<LOQ
CBDV	10.000	0.000065	0.001	<LOQ	<LOQ
Delta-9 THC	10.000	0.000013	0.001	<LOQ	<LOQ
CBN	10.000	0.000014	0.001	<LOQ	<LOQ
Delta-10 THC	10.000	0.000003	0.001	<LOQ	<LOQ
THCA-A	10.000	0.000032	0.001	<LOQ	<LOQ

Tested (LCUV)

Potency Summary

Total Delta 8 76.405%	Total Delta 10 None Detected
Total THC None Detected	Total CBD 0.228%
Total CBG None Detected	Total CBN None Detected
Other Cannabinoids 10.262%	Total Cannabinoids 95.932%

Terpenes Summary

Analyte	Result (mg/ml)	(%)
trans-Caryophyllene	16.645	1.665%
(R)-(+)-Limonene	6.059	0.606%
beta-Myrcene	5.044	0.504%
Linalool	2.591	0.259%
Terpineol	2.507	0.251%
alpha-Humulene	1.882	0.188%
alpha-Bisabolol	1.85	0.185%
beta-Pinene	1.429	0.143%
alpha-Pinene	1.305	0.13%
Fenchyl Alcohol	1.266	0.127%

Total Terpenes: 4.058%

Detailed Terpenes Analysis is on the following page

Xueli Gao
Xueli Gao
Ph.D., DABT
Lab Toxicologist

Aixia Sun
Aixia Sun
D.H.Sc., M.Sc., B.Sc., MT (AAB)
Lab Director/Principal Scientist



Definitions and Abbreviations used in this report: *Total CBD = CBD + (CBD-A * 0.877), *Total THC = THCA-A * 0.877 + Delta 9 THC, *CBG Total = (CBGA * 0.877) + CBG, *CBN Total = (CBNA * 0.877) + CBN, *Other Cannabinoids Total = CBC + CBDV + THCV + THCV-A, *Total Detected Cannabinoids = CBD Total + CBG Total + CBN Total + THC Total + CBC + CBDV + THCV + THCV-A, *Analyte Details above show the Dry Weight Concentrations unless specified as 12% moisture concentration. (mg/ml) = Milligrams per Milliliter, LOQ = Limit of Quantitation, LOD = Limit of Detection, Dilution = Dilution Factor (ppb) = Parts per Billion, (%) = Percent, (cfu/g) = Colony Forming Unit per Gram (cfu/g) = Colony Forming Unit per Gram, LOD = Limit of Detection, (µg/g) = Microgram per Gram (ppm) = Parts per Million, (ppm) = (µg/g), (aw) = aw (area ratio) = Area Ratio, (mg/Kg) = Milligram per Kilogram, *Measurement of Uncertainty = +/- 5%

This report shall not be reproduced, without written approval, from ACS Laboratory. The results of this report relate only to the material or product analyzed. Test results are confidential unless explicitly waived otherwise. Accredited by a third-party accrediting body as a competent testing laboratory pursuant to ISO/IEC 17025 of the International Organization for Standardization.





License No. 800025015
FL License # CMTL-0003
CLIA No. 10D1094068

Certificate of Analysis

R&D

3CHI
274 MEDICAL DR # 875
CARMEL, IN 46082

Batch # 210422-D8THCV
Batch Date: 2021-04-22
Extracted From: Hemp

Test Reg State: Florida

Order # 3CH210422-040034
Order Date: 2021-04-22
Sample # AABG306

Sampling Date: 2021-04-26
Lab Batch Date: 2021-04-26
Completion Date: 2021-05-21

Initial Gross Weight: 74.107 g



Potency - 20

Specimen Weight: 50.180 mg

Tested

(HPLC)

Pieces For Panel: 2

Analyte	Dilution (1:n)	LOD (%)	LOQ (%)	Result (mg/g)	(%)
Delta-8 THC	10.000	0.000026	0.001	764.047	76.405
CBC	10.000	0.000018	0.001	92.521	9.252
Delta-8 THCV	10.000	0.0002	0.001	90.374	9.037
THCV	10.000	0.000007	0.001	7.045	0.704
CBT	10.000	0.0002	0.001	3.056	0.306
CBD	10.000	0.000054	0.001	2.277	0.228
CBDVA	10.000	0.000014	0.001	<LOQ	
CBDA	10.000	0.00001	0.001	<LOQ	
THCA-A	10.000	0.000032	0.001	<LOQ	
THCVA	10.000	0.000047	0.001	<LOQ	
CBG	10.000	0.000248	0.001	<LOQ	
Exo-THC	10.000	0.0002	0.001	<LOQ	
CBCA	10.000	0.000107	0.001	<LOQ	
CBDV	10.000	0.000065	0.001	<LOQ	
Delta-10 THC	10.000	0.000003	0.001	<LOQ	
CBNA	10.000	0.000095	0.001	<LOQ	
CBN	10.000	0.000014	0.001	<LOQ	
CBL	10.000	0.000035	0.001	<LOQ	
CBGA	10.000	0.00008	0.001	<LOQ	
Delta-9 THC	10.000	0.000013	0.001	<LOQ	

Xueli Gao
Xueli Gao Lab Toxicologist
Ph.D., DABT

Aixia Sun
Aixia Sun Lab Director/Principal Scientist
D.H.Sc., M.Sc., B.Sc., MT (AAB)



Definitions and Abbreviations used in this report: *Total CBD = CBD + (CBD-A * 0.877), *Total THC = THCA-A * 0.877 + Delta 9 THC, *CBG Total = (CBGA * 0.877) + CBG, *CBN Total = (CBNA * 0.877) + CBN, *Other Cannabinoids Total = CBC + CBDV + THCV + THCVA, *Total Detected Cannabinoids = CBD Total + CBG Total + CBN Total + THC Total + CBC + CBDV + THCV + THCVA, *Analyte Details above show the Dry Weight Concentrations unless specified as 12% moisture concentration. (mg/ml) = Milligrams per Milliliter, LOQ = Limit of Quantitation, LOD = Limit of Detection, Dilution = Dilution Factor (ppb) = Parts per Billion, (%) = Percent, (cfu/g) = Colony Forming Unit per Gram (cfu/g) = Colony Forming Unit per Gram, , LOD = Limit of Detection, (µg/g) = Microgram per Gram (ppm) = Parts per Million, (ppm) = (µg/g), (aw) = aw (area ratio) = Area Ratio, (mg/Kg) = Milligram per Kilogram, *Measurement of Uncertainty = +/- 5%



This report shall not be reproduced, without written approval, from ACS Laboratory. The results of this report relate only to the material or product analyzed. Test results are confidential unless explicitly waived otherwise. Accredited by a third-party accrediting body as a competent testing laboratory pursuant to ISO/IEC 17025 of the International Organization for Standardization.



License No. 800025015
FL License # CMTL-0003
CLIA No. 10D1094068

Certificate of Analysis

R&D

3CHI
274 MEDICAL DR # 875
CARMEL, IN 46082

Batch # 210422-D8THCv
Batch Date: 2021-04-22
Extracted From: Hemp

Test Reg State: Florida

Order # 3CH210422-040034
Order Date: 2021-04-22
Sample # AABG306

Sampling Date: 2021-04-26
Lab Batch Date: 2021-04-26
Completion Date: 2021-05-21

Initial Gross Weight: 74.107 g



Terpenes - FL

Specimen Weight: 163.580 mg

Tested
(GC/GCMS)

Pieces For Panel: 2 Dilution Factor: 1000.000

Analyte	LOQ (%)	Result (mg/g)	(%)	Analyte	LOQ (%)	Result (mg/g)	(%)
trans-Caryophyllene	0.02	16.645	1.665	(R)-(+)-Limonene	0.02	6.059	0.606
beta-Myrcene	0.02	5.044	0.504	Linalool	0.02	2.591	0.259
Terpineol	0.02	2.507	0.251	alpha-Humulene	0.02	1.882	0.188
alpha-Bisabolol	0.02	1.850	0.185	beta-Pinene	0.02	1.429	0.143
alpha-Pinene	0.02	1.305	0.130	Fenchyl Alcohol	0.02	1.266	0.127
Ocimene	0.014	<LOQ		Isoborneol	0.02	<LOQ	
Isopulegol	0.02	<LOQ		Nerol	0.02	<LOQ	
(+)-Cedrol	0.02	<LOQ		Pulegone	0.02	<LOQ	
Sabinene	0.02	<LOQ		Guaiol	0.02	<LOQ	
Sabinene Hydrate	0.02	<LOQ		Terpinolene	0.02	<LOQ	
trans-Nerolidol	0.02	<LOQ		Hexahydrothymol	0.02	<LOQ	
Fenchone	0.02	<LOQ		Geranyl acetate	0.02	<LOQ	
Borneol	0.04	<LOQ		3-Carene	0.02	<LOQ	
alpha-Cedrene	0.02	<LOQ		alpha-Phellandrene	0.02	<LOQ	
alpha-Terpinene	0.02	<LOQ		Camphene	0.02	<LOQ	
Geraniol	0.02	<LOQ		Camphors	0.04	<LOQ	
Caryophyllene oxide	0.02	<LOQ		cis-Nerolidol	0.02	<LOQ	
Eucalyptol	0.02	<LOQ		Farnesene	0.02	<LOQ	
Gamma-Terpinene	0.02	<LOQ		Valencene	0.02	<LOQ	

Total Terpenes: 4.058%

Xueli Gao
Xueli Gao Lab Toxicologist
Ph.D., DABT

Aixia Sun
Aixia Sun Lab Director/Principal Scientist
D.H.Sc., M.Sc., B.Sc., MT (AAB)



Definitions and Abbreviations used in this report: *Total CBD = CBD + (CBD-A * 0.877), *Total THC = THCA-A * 0.877 + Delta 9 THC, *CBG Total = (CBGA * 0.877) + CBG, *CBN Total = (CBNA * 0.877) + CBN, *Other Cannabinoids Total = CBC + CBDV + THCV + THCV-A, *Total Detected Cannabinoids = CBD Total + CBG Total + CBN Total + THC Total + CBC + CBDV + THCV + THCV-A, *Analyte Details above show the Dry Weight Concentrations unless specified as 12% moisture concentration. (mg/ml) = Milligrams per Milliliter, LOQ = Limit of Quantitation, LOD = Limit of Detection, Dilution = Dilution Factor (ppb) = Parts per Billion, (%) = Percent, (cfu/g) = Colony Forming Unit per Gram (cfu/g) = Colony Forming Unit per Gram, , LOD = Limit of Detection, (µg/g) = Microgram per Gram (ppm) = Parts per Million, (ppm) = (µg/g), (aw) = aw (area ratio) = Area Ratio, (mg/Kg) = Milligram per Kilogram, *Measurement of Uncertainty = +/- 5%



This report shall not be reproduced, without written approval, from ACS Laboratory. The results of this report relate only to the material or product analyzed. Test results are confidential unless explicitly waived otherwise. Accredited by a third-party accrediting body as a competent testing laboratory pursuant to ISO/IEC 17025 of the International Organization for Standardization.



License No. 800025015
FL License # CMTL-0003
CLIA No. 10D1094068

Certificate of Analysis

R&D

3CHI
274 MEDICAL DR # 875
CARMEL, IN 46082

Batch # 210422-D8THCv
Batch Date: 2021-04-22
Extracted From: Hemp

Test Reg State: Florida

Order # 3CH210422-040034
Order Date: 2021-04-22
Sample # AABG306

Sampling Date: 2021-04-26
Lab Batch Date: 2021-04-26
Completion Date: 2021-05-21

Initial Gross Weight: 74.107 g

H Heavy Metals **Passed**
(ICP-MS)
Specimen Weight: 245.400 mg

Pieces For Panel: 2 Dilution Factor: 2.000

Analyte	LOQ (ppb)	Action Level (ppb)	Result (ppb)	Analyte	LOQ (ppb)	Action Level (ppb)	Result (ppb)
Arsenic (As)	100	1500	<LOQ	Cadmium (Cd)	100	500	<LOQ
Lead (Pb)	100	500	<LOQ	Mercury (Hg)	100	3000	<LOQ

Mycotoxins **Passed**
(LCMS)
Specimen Weight: 196.040 mg

Pieces For Panel: 2 Dilution Factor: 7.652

Analyte	LOQ (ppb)	Action Level (ppb)	Result (ppb)	Analyte	LOQ (ppb)	Action Level (ppb)	Result (ppb)
Aflatoxin B1	6	20	<LOQ	Aflatoxin B2	6	20	<LOQ
Aflatoxin G1	6	20	<LOQ	Aflatoxin G2	6	20	<LOQ
Ochratoxin A	12	20	<LOQ				

Xueli Gao
Xueli Gao Lab Toxicologist
Ph.D., DABT

Aixia Sun
Aixia Sun Lab Director/Principal Scientist
D.H.Sc., M.Sc., B.Sc., MT (AAB)



Definitions and Abbreviations used in this report: *Total CBD = CBD + (CBD-A * 0.877), *Total THC = THCA-A * 0.877 + Delta 9 THC, *CBG Total = (CBGA * 0.877) + CBG, *CBN Total = (CBNA * 0.877) + CBN, *Other Cannabinoids Total = CBC + CBDV + THCV + THCV-A, *Total Detected Cannabinoids = CBD Total + CBG Total + CBN Total + THC Total + CBC + CBDV + THCV + THCV-A, *Analyte Details above show the Dry Weight Concentrations unless specified as 12% moisture concentration. (mg/ml) = Milligrams per Milliliter, LOQ = Limit of Quantitation, LOD = Limit of Detection, Dilution = Dilution Factor (ppb) = Parts per Billion, (%) = Percent, (cfu/g) = Colony Forming Unit per Gram (cfu/g) = Colony Forming Unit per Gram, , LOD = Limit of Detection, (µg/g) = Microgram per Gram (ppm) = Parts per Million, (ppm) = (µg/g), (aw) = aw (area ratio) = Area Ratio, (mg/Kg) = Milligram per Kilogram, *Measurement of Uncertainty = +/- 5%



This report shall not be reproduced, without written approval, from ACS Laboratory. The results of this report relate only to the material or product analyzed. Test results are confidential unless explicitly waived otherwise. Accredited by a third-party accrediting body as a competent testing laboratory pursuant to ISO/IEC 17025 of the International Organization for Standardization.



License No. 800025015
FL License # CMTL-0003
CLIA No. 10D1094068

Certificate of Analysis

R&D

3CHI
274 MEDICAL DR # 875
CARMEL, IN 46082

Batch # 210422-D8THCV
Batch Date: 2021-04-22
Extracted From: Hemp

Test Reg State: Florida

Order # 3CH210422-040034
Order Date: 2021-04-22
Sample # AABG306

Sampling Date: 2021-04-26
Lab Batch Date: 2021-04-26
Completion Date: 2021-05-21

Initial Gross Weight: 74.107 g



Pesticides FL V4

Specimen Weight: 196.040 mg

Passed
(LCMS/GCMS)

Pieces For Panel: 2 Dilution Factor: 7.652

Analyte	LOQ (ppb)	Action Level (ppb)	Result (ppb)	Analyte	LOQ (ppb)	Action Level (ppb)	Result (ppb)
Abamectin	28.23	300	<LOQ	Acephate	30	3000	<LOQ
Acequinocyl	48	2000	<LOQ	Acetamiprid	30	3000	<LOQ
Aldicarb	30	100	<LOQ	Azoxystrobin	10	3000	<LOQ
Bifenazate	30	3000	<LOQ	Bifenthrin	30	500	<LOQ
Boscalid	10	3000	<LOQ	Captan	30	3000	<LOQ
Carbaryl	10	500	<LOQ	Carbofuran	10	100	<LOQ
Chlorantraniliprole	10	3000	<LOQ	Chlordane	10	100	<LOQ
Chlorfenapyr	30	100	<LOQ	Chloromequat Chloride	10	3000	<LOQ
Chlorpyrifos	30	100	<LOQ	Clofentezine	30	500	<LOQ
Coumaphos	48	100	<LOQ	Cyfluthrin	30	1000	<LOQ
Cypermethrin	30	1000	<LOQ	Daminozide	30	100	<LOQ
Diazinon	30	200	<LOQ	Dichlorvos	30	100	<LOQ
Dimethoate	30	100	<LOQ	Dimethomorph	48	3000	<LOQ
Ethoprophos	30	100	<LOQ	Etofenprox	30	100	<LOQ
Etoxazole	30	1500	<LOQ	Fenhexamid	10	3000	<LOQ
Fenoxycarb	30	100	<LOQ	Fenpyroximate	30	2000	<LOQ
Fipronil	30	100	<LOQ	Flonicamid	30	2000	<LOQ
Fludioxonil	48	3000	<LOQ	Hexythiazox	30	2000	<LOQ
Imazalil	30	100	<LOQ	Imidacloprid	30	3000	<LOQ
Kresoxim Methyl	30	1000	<LOQ	Malathion	30	2000	<LOQ
Metalaxyl	10	3000	<LOQ	Methiocarb	30	100	<LOQ
Methomyl	30	100	<LOQ	methyl-Parathion	10	100	<LOQ
Mevinphos	10	100	<LOQ	Myclobutanil	30	3000	<LOQ
Naled	30	500	<LOQ	Oxamyl	30	500	<LOQ
Paclbutrazol	30	100	<LOQ	Pentachloronitrobenzene	10	200	<LOQ
Permethrin	30	1000	<LOQ	Phosmet	30	200	<LOQ
Piperonylbutoxide	30	3000	<LOQ	Prallethrin	30	400	<LOQ
Propiconazole	30	1000	<LOQ	Propoxur	30	100	<LOQ
Pyrethrins	30	1000	<LOQ	Pyridaben	30	3000	<LOQ
Spinetoram	10	3000	<LOQ	Spinosad	30	3000	<LOQ
Spiromesifen	30	3000	<LOQ	Spirotetramat	30	3000	<LOQ
Spiroxamine	30	100	<LOQ	Tebuconazole	30	1000	<LOQ
Thiacloprid	30	100	<LOQ	Thiamethoxam	30	1000	<LOQ
Trifloxystrobin	30	3000	<LOQ				

Xueli Gao
Xueli Gao Lab Toxicologist
Ph.D., DABT

Aixia Sun
Aixia Sun Lab Director/Principal Scientist
D.H.Sc., M.Sc., B.Sc., MT (AAB)



Definitions and Abbreviations used in this report: *Total CBD = CBD + (CBD-A * 0.877), *Total THC = THCA-A * 0.877 + Delta 9 THC, *CBG Total = (CBGA * 0.877) + CBG, *CBN Total = (CBNA * 0.877) + CBN, *Other Cannabinoids Total = CBC + CBDV + THCV + THCV-A, *Total Detected Cannabinoids = CBD Total + CBG Total + CBN Total + THC Total + CBC + CBDV + THCV + THCV-A, *Analyte Details above show the Dry Weight Concentrations unless specified as 12% moisture concentration. (mg/ml) = Milligrams per Milliliter, LOQ = Limit of Quantitation, LOD = Limit of Detection, Dilution = Dilution Factor (ppb) = Parts per Billion, (%) = Percent, (cfu/g) = Colony Forming Unit per Gram (cfu/g) = Colony Forming Unit per Gram, , LOD = Limit of Detection, (µg/g) = Microgram per Gram (ppm) = Parts per Million, (ppm) = (µg/g), (aw) = aw (area ratio) = Area Ratio, (mg/Kg) = Milligram per Kilogram, *Measurement of Uncertainty = +/- 5%



This report shall not be reproduced, without written approval, from ACS Laboratory. The results of this report relate only to the material or product analyzed. Test results are confidential unless explicitly waived otherwise. Accredited by a third-party accrediting body as a competent testing laboratory pursuant to ISO/IEC 17025 of the International Organization for Standardization.



License No. 800025015
FL License # CMTL-0003
CLIA No. 10D1094068

Certificate of Analysis

R&D

3CHI
274 MEDICAL DR # 875
CARMEL, IN 46082

Batch # 210422-D8THCV
Batch Date: 2021-04-22
Extracted From: Hemp

Test Reg State: Florida

Order # 3CH210422-040034
Order Date: 2021-04-22
Sample # AABG306

Sampling Date: 2021-04-26
Lab Batch Date: 2021-04-26
Completion Date: 2021-05-21

Initial Gross Weight: 74.107 g



Residual Solvents - FL (CBD)

Specimen Weight: 10.100 mg

Passed
(GCMS)

Pieces For Panel: 2 Dilution Factor: 1.000

Analyte	LOQ (ppm)	Action Level (ppm)	Result (ppm)	Analyte	LOQ (ppm)	Action Level (ppm)	Result (ppm)
1,1-Dichloroethene	0.16	8	<LOQ	1,2-Dichloroethane	0.04	5	<LOQ
Acetone	2.08	5000	<LOQ	Acetonitrile	1.17	410	<LOQ
Benzene	0.02	2	<LOQ	Butanes	2.5	2000	<LOQ
Chloroform	0.04	60	<LOQ	Ethanol	2.78	5000	<LOQ
Ethyl Acetate	1.11	5000	<LOQ	Ethyl Ether	1.39	5000	<LOQ
Ethylene Oxide	0.1	5	<LOQ	Heptane	1.39	5000	<LOQ
Hexane	1.17	290	<LOQ	Isopropyl alcohol	1.39	500	<LOQ
Methanol	0.69	3000	<LOQ	Methylene chloride	2.43	600	<LOQ
Pentane	2.08	5000	<LOQ	Propane	5.83	2100	<LOQ
Toluene	2.92	890	<LOQ	Total Xylenes	2.92	2170	<LOQ
Trichloroethylene	0.49	80	<LOQ				

Xueli Gao
Xueli Gao Lab Toxicologist
Ph.D., DABT

Aixia Sun
Aixia Sun Lab Director/Principal Scientist
D.H.Sc., M.Sc., B.Sc., MT (AAB)



Definitions and Abbreviations used in this report: *Total CBD = CBD + (CBD-A * 0.877), *Total THC = THCA-A * 0.877 + Delta 9 THC, *CBG Total = (CBGA * 0.877) + CBG, *CBN Total = (CBNA * 0.877) + CBN, *Other Cannabinoids Total = CBC + CBDV + THCV + THCV-A, *Total Detected Cannabinoids = CBD Total + CBG Total + CBN Total + THC Total + CBC + CBDV + THCV + THCV-A, *Analyte Details above show the Dry Weight Concentrations unless specified as 12% moisture concentration. (mg/ml) = Milligrams per Milliliter, LOQ = Limit of Quantitation, LOD = Limit of Detection, Dilution = Dilution Factor (ppb) = Parts per Billion, (%) = Percent, (cfu/g) = Colony Forming Unit per Gram (cfu/g) = Colony Forming Unit per Gram, , LOD = Limit of Detection, (µg/g) = Microgram per Gram (ppm) = Parts per Million, (ppm) = (µg/g), (aw) = aw (area ratio) = Area Ratio, (mg/Kg) = Milligram per Kilogram, *Measurement of Uncertainty = +/- 5%



This report shall not be reproduced, without written approval, from ACS Laboratory. The results of this report relate only to the material or product analyzed. Test results are confidential unless explicitly waived otherwise. Accredited by a third-party accrediting body as a competent testing laboratory pursuant to ISO/IEC 17025 of the International Organization for Standardization.



License No. 800025015
FL License # CMTL-0003
CLIA No. 10D1094068

Certificate of Analysis

R&D

3CHI

274 MEDICAL DR # 875
CARMEL, IN 46082

Batch # 210422-D8THCv
Batch Date: 2021-04-22
Extracted From: Hemp

Test Reg State: Florida

Order # 3CH210422-040034
Order Date: 2021-04-22
Sample # AABG306

Sampling Date: 2021-04-26
Lab Batch Date: 2021-04-26
Completion Date: 2021-05-21

Initial Gross Weight: 74.107 g



Pathogenic Microbiology SAE (MicroArray)

Specimen Weight: 1029.300 mg

Passed
(Micro Array)

Pieces For Panel: 2 Dilution Factor: 1.000

Analyte	Result (cfu/g)	Analyte	Result (cfu/g)
Aspergillus flavus	Absence in 1g	Aspergillus fumigatus	Absence in 1g
Aspergillus niger	Absence in 1g	Aspergillus terreus	Absence in 1g
Salmonella	Absence in 1g	STEC E. Coli	Absence in 1g



Listeria Monocytogenes

Specimen Weight: 1020.370 mg

Passed
(qPCR)

Pieces For Panel: 2 Dilution Factor: 1.000

Analyte	Action Level (cfu/g)	Result
Listeria Monocytogenes	1	Absence in 1g

Xueli Gao
Xueli Gao Lab Toxicologist
Ph.D., DABT

Aixia Sun
Aixia Sun Lab Director/Principal Scientist
D.H.Sc., M.Sc., B.Sc., MT (AAB)



Definitions and Abbreviations used in this report: *Total CBD = CBD + (CBD-A * 0.877), *Total THC = THC-A * 0.877 + Delta 9 THC, *CBG Total = (CBGA * 0.877) + CBG, *CBN Total = (CBNA * 0.877) + CBN, *Other Cannabinoids Total = CBC + CBDV + THCV + THCV-A, *Total Detected Cannabinoids = CBD Total + CBG Total + CBN Total + THC Total + CBC + CBDV + THCV + THCV-A, *Analyte Details above show the Dry Weight Concentrations unless specified as 12% moisture concentration. (mg/ml) = Milligrams per Milliliter, LOQ = Limit of Quantitation, LOD = Limit of Detection, Dilution = Dilution Factor (ppb) = Parts per Billion, (%) = Percent, (cfu/g) = Colony Forming Unit per Gram (cfu/g) = Colony Forming Unit per Gram, , LOD = Limit of Detection, (µg/g) = Microgram per Gram (ppm) = Parts per Million, (ppm) = (µg/g), (aw) = aw (area ratio) = Area Ratio, (mg/Kg) = Milligram per Kilogram, *Measurement of Uncertainty = +/- 5%



This report shall not be reproduced, without written approval, from ACS Laboratory. The results of this report relate only to the material or product analyzed. Test results are confidential unless explicitly waived otherwise. Accredited by a third-party accrediting body as a competent testing laboratory pursuant to ISO/IEC 17025 of the International Organization for Standardization.